



EVENTS SPOTLIGHT

The latest and greatest events at the Chilliwack Cultural Centre!

Dear Patron,

You are receiving this email as you had indicated that you were interested in being sent information about upcoming events available through the Centre Box Office. If you see something you like, just click on the link for that show to get more details or to order tickets. You can also contact the Centre Box Office in person (Monday - Friday, 9:30am-9:00pm, Saturday & Sunday, 9:30am-5:00pm and open one hour before performances) at 9201 Corbould Street, Chilliwack, BC, V2P 4A6, by phone at 604.391.SHOW(7469), or online at www.chilliwackculturalcentre.ca We look forward to seeing you at the next show for some fantastic entertainment!

Upcoming Events

[Click Here to Buy Tickets On-Line](#)

The Chilliwack Arts & Cultural Centre Society presents

6 Guitars

6 Guitars is a pitch perfect blend of music, comedy, and characters. Chase Padgett delivers a virtuosic performance as he becomes six different guitar players – each with their own distinct voice, views, and musical style (Blues, Jazz, Rock, Classical, Folk, and Country). During this 85 minute show, each of the characters ranging from a 19 year old rock prodigy to an 87 year old blues man share their journey with music from discovery to mastery through songs and stories that leave every audience laughing, crying, and falling in love with music all over again. A love letter to music in all its various forms, 6 Guitars will resound with music lovers from the jazz masters to hard rock headbangers!

[MORE INFO](#) [Website](#) [Youtube](#) [Facebook](#)

Chilliwack Cultural Centre, Rotary Hall Studio Theatre

Wednesday, March 18, 2015, 7:30pm

Tickets: \$25

[BUY TICKETS](#)

F.G. Leary Fine Arts Elementary School presents

Alice in Wonderland Jr.

Lewis Carroll's famous inquisitive heroine comes to life in Disney's Alice in Wonderland Jr., a delightful adaptation of the classic Disney film. Join Alice as she chases the White Rabbit, races the Dodo Bird, gets tied up with Tweedle Dee and Tweedle Dum, raps with a bubble-blowing Caterpillar, and beats the *Queen of Hearts at her own game!*

F.G. Leary Fine Arts Elementary is a fine arts school of choice in the Chilliwack School District. All teachers integrate the fine arts learning outcomes, where appropriate, in core subject areas.

[MORE INFO](#) [Website](#)

Chilliwack Cultural Centre, HUB International Theatre

Tuesday, March 17, 2015, 12:30pm & 6:30pm

Wednesday, March 18, 2015, 6:30pm

Tickets: Matinee \$7, Evening \$9

[BUY TICKETS](#)

Chilliwack Divisions of Family Practice presents

Sleep Strategies

Join us for our 7th Annual Mini Med School. Talk to local doctors and other health professionals on important medical topics. This is an evening series of informal discussions and quite possibly life altering learning.

Tonight's lecture is brought to you by the letter Zzzzz:

Counting sheep, melatonin and other sleep strategies.

Join us from 7 - 9pm. For more info please call 604-702-4757 www.divisionsbc.ca/chilliwack

REGISTRATION NOT REQUIRED, BUT ENCOURAGED.

Register at: www.uniiverse.com/minimed2015

Light refreshments and snacks will be served.

[MORE INFO](#) [Website](#) [Facebook](#)

Chilliwack Cultural Centre, Rotary Hall Studio Theatre

Tuesday, March 17, 2015, 7:00pm

FREE INFORMATION SESSION

The Chilliwack Lions Club Music & Dance Festival presents

Music Honors Performance

The Chilliwack Lions Club Music and Dance Festival is a self-supporting, non-profit organization dedicated to encouraging and empowering young dancers and musicians to excel in their chosen discipline. Our members are all volunteers. Some are Lions members, and many others are dedicated community people who are also interested in the artistic development of young people. We have been part of Chilliwack for 68 years and celebrate our 68th ANNUAL FESTIVAL in 2015.

[MORE INFO](#) [Website](#) [Facebook](#)

Chilliwack Cultural Centre, HUB International Theatre

Saturday, March 21, 2015, 7:00pm

Tickets: \$10

Family Rate: 4 for \$25

Group Rate: \$40 for 5-8 family members

Call the Centre Box Office at 604-391-7469 for Family Group Rates

[BUY TICKETS](#)

The Chilliwack Arts & Cultural Centre Society presents

The Amazing Kreskin

With a showman's flair, a comedian's wit, and the capacities of a bona fide Mentalist or thought reader, **The Amazing Kreskin** has, for some six decades, dramatized the unique facets of the human mind... his own. His very name has become an integral part of pop culture throughout the world; invoked in comedy clubs, comic strips, print stories and TV, proving that there really isn't another entertainer out their quite like **The Amazing Kreskin**. With skills that go beyond that of your usual entertainer, **The Amazing Kreskin** always offers a fascinating performance with a twist – just wait for his finale to see what we mean!

[MORE INFO](#) [Website](#) [Youtube](#) [Facebook](#)

Chilliwack Cultural Centre, HUB International Theatre

Sunday, March 22, 2015, 7:30pm

Tickets: Adult \$35, Senior \$32, Student \$30

[BUY TICKETS](#)

Chilliwack Divisions of Family Practice presents

Vaccines: Why The Fuss (WTF)?

Join us for our 7th Annual Mini Med School. Talk to local doctors and other health professionals on important medical topics. This is an evening series of informal discussions and quite possibly life altering learning.

For more info please call 604-702-4757 www.divisionsbc.ca/chilliwack

REGISTRATION NOT REQUIRED, BUT ENCOURAGED.

Register at: www.uniiverse.com/minimed2015

Light refreshments and snacks will be served.

[MORE INFO](#) [Website](#) [Facebook](#)

Chilliwack Cultural Centre, Rotary Hall Studio Theatre

Tuesday, March 24, 2015, 7:00pm

FREE INFORMATION SESSION

Chilliwack Divisions of Family Practice presents

Dementia: When We Forget

Join us for our 7th Annual Mini Med School. Talk to local doctors and other health professionals on important medical topics. This is an evening series of informal discussions and quite possibly life altering learning.

Dementia: When We Forget. Join us from 7 – 9 pm.

For more info please call 604-702-4757 www.divisionsbc.ca/chilliwack

REGISTRATION NOT REQUIRED, BUT ENCOURAGED.

Register at: www.uniiverse.com/minimed2015

Light refreshments and snacks will be served.

[MORE INFO](#) [Website](#) [Facebook](#)

Chilliwack Cultural Centre, Rotary Hall Studio Theatre

Tuesday, March 31, 2015, 7:00pm

FREE INFORMATION SESSION

The Chilliwack Arts & Cultural Centre Society presents

The Vancouver International Mountain Film Festival

Returning to the Cultural Centre for its third edition, the best of the **Vancouver International Mountain Film Festival** will take you on a journey of awe and adrenaline, showcasing the exploits of extreme sportsmen and women the world over in an extravaganza of high-octane cinema. This “best of the fest” presentation will consist of specially selected winning films from the Vancouver International Mountain Film Festival, that reveal an utterly spectacular and awe-inspiring view of sport, nature, and adventure.

[MORE INFO](#) [Website](#) [Youtube](#) [Facebook](#)

Chilliwack Cultural Centre, HUB International Theatre

Saturday, April 4, 2015, 7:30pm

Tickets: \$18

[BUY TICKETS](#)

The Original Legends of Rock 'n' Roll™ presents

Elvis & Friends

Elvis & Friends is a cast of performers supported by some of the recording artists whose music or live performances Elvis most admired. Each of the artists depicted in this production are considered among the best of the best tribute artists in the world today... Donny Edwards as Elvis... Lou Nelson as Tom Jones... Laura Gillespie as Anne Murray and Bobby Brooks Wilson paying tribute to his famous father Jackie Wilson. Don't miss ELVIS & FRIENDS featuring the legendary Memphis Beats Rock'n'Roll Band... on tour in Canada during the spring of 2015.

[MORE INFO](#) [Website](#)

Chilliwack Cultural Centre, HUB International Theatre

Thursday, April 9, 2015, 7:30pm

Tickets: \$43.50

[BUY TICKETS](#)

Senior Tours Canada presents

Travelling the worry free way

THE LEADER IN TOURS FOR THE 50+ TRAVELER

With over 250 destinations to choose from, our special prices include home pick-up, airfare, accommodation, health and cancellation insurance, all tipping, taxes, porter age, meals and excursions. Please call 1-800-268-3492 with your name, telephone #, and the number of guests attending. *CALL FOR A FREE BROCHURE – 604-647-0100 OR 1-800-268-349*

[MORE INFO](#) [Website](#)

Chilliwack Cultural Centre, Rotary Hall Studio Theatre

Friday, April 10, 2015, 12:30pm – 2:00pm

Admission is FREE but registration is required.

Chilliwack Symphony Orchestra presents

We've Got Your Bach!

This concert will feature the Chilliwack Symphony Orchestra and Chorus in a glorious performance of Bach favourites. The Orchestra and Chorus will present a programme of all Bach masterpieces including a string feature and choral favourites.

[MORE INFO](#) [Website](#) [Facebook](#)

Chilliwack Cultural Centre, HUB International Theatre

Saturday, April 11, 2015, 7:30pm

Tickets: Adult \$25, Student \$15, Family price \$60

[BUY TICKETS](#)

The Chilliwack Arts & Cultural Centre Society presents

Who Killed Gertrude Crump?

The plot thickens when Tara Travis returns to the Cultural Centre with the hilarious, mysterious, and outrageous **Who Killed Gertrude Crump!** In this one-woman, haunted house, murder-mystery puppet show, Tara, (and her repertoire of hand-made characters), lead our audience on a spooky investigation to reveal the villain behind a murder most foul; that of our very own Agatha Christie styled hostess, Gertrude Crump. This murder-mystery author has come back from beyond the grave to unravel the puzzle of her own untimely demise, and Gertrude must use her skills to figure out who-dun-it; was it the Scottish Governess, the Frenchman, or perhaps the elderly Colonel? Only Gertrude can get to the bottom of this case, taking the audience with her on a brilliantly eccentric adventure packed with zany characters, tongue-twisting accents, and endless laughs, all courtesy of the uniquely versatile Tara Travis.

[MORE INFO](#) [Website](#) [Facebook](#)

Chilliwack Cultural Centre, Rotary Hall Studio Theatre

Saturday, April 11, 2015 & Sunday, April 12, 2015, 7:30pm

Tickets: \$25

[BUY TICKETS](#)

The Chilliwack Arts & Cultural Centre Society presents

The Little Prince

Meet talking roses and foxes! Venture out on interplanetary travel! Learn about true love and loyalty! Join The Little Prince on a spectacular adventure as he celebrates open-mindedness and the beauty of imagination. The well-loved and famed novella by Antoine de Saint-Exupery will be brought to the stage by Cultural Centre favourites Monster Theatre, who are sure to imprint this charming tale with their own special magic and twist. With puppets, masks, original music and a little theatre magic, the

storytelling experts of Monster Theatre capture students' hearts and funny bones as they tell the story of The Little Prince and take audiences on a journey of personal and cosmic adventure that promises to astound.

[MORE INFO](#) [Website](#) [Youtube](#) [Facebook](#)

Chilliwack Cultural Centre, HUB International Theatre

Sunday, April 12, 2015, 2:00pm

Tickets: \$10

[BUY TICKETS](#)

ALSO AT THE CENTRE BOX OFFICE:

[Sarah Hagen - Solo Piano](#) – April 17, 2015

[An Intimate Evening with John Mann](#) – April 17, 2015

[Derek Edwards - Baloney and Wine](#) – April 18, 2015

[The Fox on the Fairway](#) – April 23 to May 2, 2015

[Chilliwack's Art of Wine Festival](#) – May 9, 2015

[Rodgers & Hammerstein: Out of a Dream](#) – May 10, 2015

[Colin James - Up Close and Personal](#) – May 11, 2015

[Rhapsody in Blue](#) – May 23, 2015

[Buddy & the Beatles](#) – May 24, 2015

[Vivace!](#) – May 30, 2015

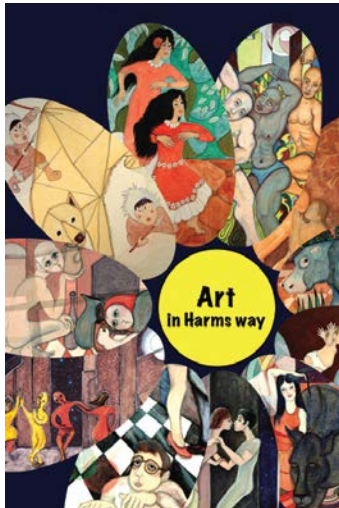
[British Pub Nights](#) – July 2 - 11, 2015

[Oklahoma](#) – July 23 - August 2, 2015

[The Last Five Years](#) – August 6 - 9, 2015

[Louisiana Hayride](#) – December 4, 2015

Chilliwack Art Gallery

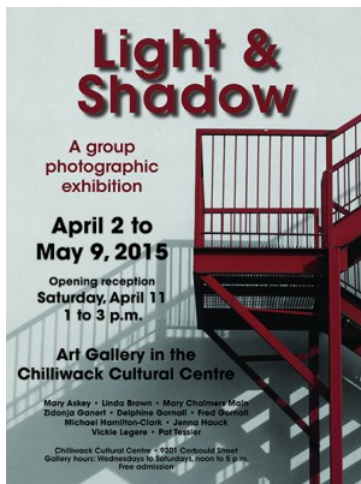


Chilliwack Visual Artists Association presents

Art in Harms Way

About Robert V Harms: Bob is a well-known local artist with an academic background and vast experience as a teacher, professional wrestler, property developer & businessman. He received some art training when at University “but the most important part of my art education has been self-directed” His studies and experience have inspired him to experiment relentlessly and his style has continuously evolved, resulting in a collection of large paintings in oil on canvas and some watercolor sketches created over several years.

Exhibition runs from February 19 – March 28, 2015



Chilliwack Visual Artists Association presents

Light and Shadows

A Group Photographic Exhibition

Featuring photographers: Mary Askey, Linda Brown, Mary Chalmers Main, Zidonja Ganert, Delphine Gornall, Fred Gornall, Michael Hamilton-Clark, Jenna Hauck, Vickie Legere and Pat Tessier.

Opening Reception: Saturday, April 11, 2015, 1 to 3:00pm

Exhibition runs from April 2 to May 9, 2015



Information for all our upcoming classes now available on our website! With a huge range of arts and crafts classes including pottery, painting and drawing, crafts and more, there really is something for everybody at the Centre. Check our website for full details on even more upcoming classes!

ASK ABOUT OUR PRIVATE CLASSES!

If you're interested in a particular topic or art form, we can arrange a time for you to sit down one-on-one with an instructor to get personalized instruction. We can also organize private classes for you and a group of friends for the ultimate crafting club experience!

Beginner's Photography

Saturday 1:00 to 4:00pm

March 28, 2015

\$29

[More Info](#)

Glass Flowers

Sunday 10:00am to 3:00pm

April 12, 2015

\$85

[More Info](#)

Magic Mud

Mondays, 3:30 to 5:00pm

April 13 – May 25, 2015

\$135

[More Info](#)

Intro to Watercolour

Thursdays, 10:00am to 12:30pm

April 16 – May 21, 2015

\$16 0

[More Info](#)

Stopmotion

Thursdays, 3:30 to 5:30pm

April 16 – June 4, 2015

\$140

[More Info](#)

Making Glass Beads

Thursdays, 6:30 to 8:30pm

April 16 – May 21, 2015

\$245

[More Info](#)

Still Life Drawing

Fridays, 10:00am to 12:00pm

April 17 – May 22, 2015

\$130

[More Info](#)

Intro to Drawing

Fridays, 1:00 to 3:00pm

April 17 – May 22, 2015

\$130

[More Info](#)

Portrait Photography

Saturday, 1:00 to 4:00pm

April 18, 2015

\$29

[More Info](#)

Garden Markers

Tuesday, 6:30 to 8:30pm

April 21, 2015

\$35

[More Info](#)

Clay Creators: Handbuilding

Wednesdays, 6:30 to 9:00pm

April 22 – June 24, 2015

\$250

[More Info](#)

Rain Chains

Saturday, 1:00 to 5:00pm

April 25, 2015

\$55

[More Info](#)

Clay Creators: Wheel

Saturdays, 1:30 to 4:00pm

April 25 – July 4, 2015

\$250

[More Info](#)

Enameling

Tuesdays, 6:30 to 8:30pm

May 19 – June 9, 2015

\$150

[More Info](#)

Beginners Photography

Saturday, 1:00 to 4:00pm

May 30, 2015

\$29

[More Info](#)

Landscape & Travel Photography

Saturday, 1:00 to 4:00pm

June 27, 2015

\$29

[More Info](#)

Continuing Open Studios

Clay Open Studio

Drop in \$6, or 10 Session Punch Card for \$50

Mondays from 6:00PM – 9:00PM

Fridays from 10:00AM – 1:00PM

Life Drawing Open Studio

Drop In \$12, \$40 Monthly Subscription, 5 Session Punch Card for \$55

Wednesdays from 6:30PM – 9:00PM

Saturdays from 10:00am to 12:30pm

Paper Crafts Open Studio

Drop in \$7, or \$56 for a 10 Session Punch Card

Wednesdays from 6:30PM – 9:00PM



Click here to find us on Facebook!



Click here to follow us @ChwkCulturalCtr



Click here to view and follow our Pinterest boards!



The Chilliwack Cultural Centre's ***Dinner and a Show program*** offers discounts or specials at some of Chilliwack's best restaurants.

On the night of your show, you simply present your ticket prior to ordering and receive your discount of special!

Restaurants involved in this fantastic offer include:

AUSTIN FISH & CHIPS, BOZZINI'S, CORKY'S, DECADES, KURO, ORIGINAL JOE'S, PRESTONS, RUSTICA'S, SOCIETY GATHERING HOUSE, SWISS CHALET, VITA BELLA, AND WOO MAI.

For more details go to our website:

www.chilliwackculturalcentre.ca



birthdays • anniversaries • thank you's • holidays

Gift Certificates
make the
perfect gift!

available in \$20 & \$50

Treat family, friends and co-workers to **thrilling entertainment!**

Centre
Box Office 604.391.SHOW(7469)

Want to know more? To find out more details on upcoming events, venue rentals, series subscriptions, and more, check out www.chilliwackculturalcentre.ca or call the Centre Box Office at 604.391.SHOW(7469).

ERRORS AND OMISSIONS

While we take many precautions to ensure the accuracy of the Centre Box Office Newsletter, occasionally errors or omissions appear. Ticket holders are encouraged to double-check dates and times on their tickets. Information on the Tickets always supersedes email listings. Should there be a discrepancy between the cost, date, time, or venue listed in this email verses the information provided to us by the presenter, then the presenter information shall always be taken as correct. If you are unsure, please call the Centre Box Office to be on the safe side - 604.391.SHOW(7469).

AND FINALLY...a note about scents

Some patrons have allergies or sensitivities to scented products. Please consider this when attending events. Your respect is appreciated.

If this is sent to you in error, or you wish to stop receiving this newsletter, click [here](#) or please reply to this message with "remove from mailing list" in the subject line, thank you.

The Chilliwack Arts & Cultural Centre Society is registered under the British Columbia Society Act as a not-for-profit society (society number S-54973), and is a registered Canadian charitable organization under the Canadian Charities Directorate. (charity number 805742897 RR0001)

If you wish to be removed from this email list, simply reply to this email.