



Dear Patron,

You are receiving this email as you had indicated that you were interested in being sent information about upcoming events available through the Centre Box Office. If you see something you like, just click on the link for that show to get more details or to order tickets. You can also contact the Centre Box Office in person (Mon-Fri, 9:30am-9:00pm, Sat & Sun, 9:30am-5:00pm) at 9201 Corbould Street, Chilliwack, BC, V2P 4A6, by phone at 604.391.SHOW(7469), or online at www.chilliwackculturalcentre.ca We look forward to seeing you at the next show for some fantastic entertainment!

Upcoming Events

[Click Here to Buy Tickets On-Line](#)

The Chilliwack Players Guild presents



'TIS THE SEASON

A fun-filled variety show to get the whole family in the Holiday spirit. Lots of skits and songs for the young and the young at heart, which will have you laughing, tapping your toes and maybe even singing along! For more information about The Chilliwack Players Guild check out the [website](#).

Chilliwack Cultural Centre – Main Theatre

7:30 PM November 30, December 1, 2 & 4, 2011

2:00 PM Saturday, December 3 and Sunday December 4, 2011

Adult \$15 Student/Senior \$12 Family/Group of four \$40

[MORE INFO](#) [BUY ONLINE](#)

The Chilliwack Academy of Music presents



THE WINDS OF CHRISTMAS

Join the Chilliwack Festival Chorus for a Christmas concert that blends traditional and contemporary sounds. Tickets available at the Centre Box Office.

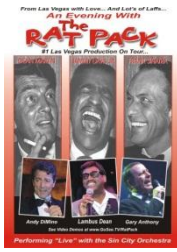
Check out the [Music Academy website](#)

Chilliwack Cultural Centre – Rotary Hall Studio Theatre

2:00 PM Sunday, December 4, 2011

Tickets: \$20 Seniors: \$17 Students: \$5 [MORE INFO](#) [BUY ONLINE](#)

Jaguar Music Group presents



CHRISTMAS WITH THE RAT PACK...DEAN, SAMMY AND FRANK with the Sin City Orchestra

Dino, Frank and Sammy are Back! The best Vegas show of all time is coming to town! Living the high life of booze, broads and bright lights, the legendary Rat Pack always projected a sense of utter detachment and serenity. Dean Martin, Sammy Davis and Frank Sinatra were less entertainers than icons... the eternal essence of cool. Check out the gang on [YouTube](#)

Chilliwack Cultural Centre – Main Theatre

8:00 PM Friday, December 9, 2011

All Tickets \$45

[MORE INFO](#) [BUY ONLINE](#)

The Fraser Valley Philharmonic Society presents



AMAH! & THE NIGHT VISITORS

The Fraser Valley Philharmonic Society was established by musicians in Chilliwack, British Columbia, with an interest in supporting and encouraging music projects and organizations in the region.

[YouTube](#) [Website](#)

Chilliwack Cultural Centre – Main Theatre

7:00 PM Saturday, December 10, 2011

Dress Circle \$30 Orchestra \$25 Gallery \$20

[MORE INFO](#) [BUY ONLINE](#)

Chilliwack Art Gallery

The Chilliwack Visual Artists Association presents



INSPIRED BY LIGHT *Featuring Sylvie Roussel-Janssens*

Exhibition of light sculptures in a variety of sizes, colours, and themes. Exploring the possibilities between art and design, Sylvie Roussel- Janssens has now embarked in a new adventure with her light sculptures. Using fabric and welded wire, magical shapes and images become abstract pieces, masks, kinetic sculptures or a whole range of native trees in the form of wall pieces. Opening Reception: 1:00 - 3:00 pm Saturday, November 5, 2011. See more on [Sylvie's website](#)

Chilliwack Cultural Centre – Chilliwack Arts Gallery

November 2 - December 15, 2011 – Extended!

Gallery Hours: 12:00-5:00 PM Wednesday - Saturday

Free Admission

[MORE INFO](#)

ALSO AT THE CENTRE BOX OFFICE

[A Year with Frog and Toad](#) – January 12 – 22, 2012

[The Ultimate Comedy Show](#) – January 27, 2012

[The Sojourners](#) – January 28, 2012

[Bella Notte](#) – February 4, 2012

[Rhapsody for Two – The Bergmann Duo](#) – February 12, 2012

[National Ballet of Cuba](#) – February 14, 2012

[Chris Gibbs is...Antoine Feval](#) – February 16, 2012

[Ndidi O](#) – February 24, 2012

[Secrets...with Shawn Farquhar](#) – February 25, 2012

[I Am Woman! Hear Me Laff!](#) – March 8, 2012

[Hansel & Gretel](#) – March 11, 2012

[Fire & Passion – Joel Stobbe](#) – March 11, 2012

[Walking Mad & Other Works](#) – March 17, 2012

[Caladh Nua](#) – March 21, 2012

[Good Timber – Songs and Stories of the Western Logger](#) – March 29, 2012

[Voices](#) – March 31, 2012

[Peter Pan](#) – April 8, 2012

[UBUNTU – The Cape Town Project](#) – April 10, 2012

[Fiddler on the Roof](#) – April 18 – 28, 2012

[Bohemian Rhapsodies – The Pacific Rim String Quartet](#) – April 22, 2012

[Annual Spring Grand Concert](#) – May 26, 2012

[Awakenings](#) – July 11 – 15, 2012

birthdays • anniversaries • thank you's • holidays

**Gift Certificates
make the
perfect gift!**



available in \$20 & \$50

Treat family, friends and co-workers to **thrilling entertainment!**

 **604.391.SHOW(7469)**



The Chilliwack Cultural Centre's *Dinner and a Show program* offers discounts or specials at some of Chilliwack's best restaurants. On the night of your show, you simply present your ticket prior to ordering and receive your discount of special.

For more details and participating restaurants got to our website:

www.chilliwackculturalcentre.ca

Want to know more? To find out more details on upcoming events, venue rentals, series subscriptions, and more, check out www.chilliwackculturalcentre.ca or call the Centre Box Office at 604.391.SHOW(7469).

ERRORS AND OMISSIONS

While we take many precautions to ensure the accuracy of the Centre Box Office Newsletter, occasionally errors or omissions appear. Ticket holders are encouraged to double-check dates and times on their tickets. Information on the Tickets always supersedes email listings. Should there be a discrepancy between the cost, date, time, or venue listed in this email verses the information provided to us by the presenter, then the presenter information shall always be taken as correct. If you are unsure, please call the Centre Box Office to be on the safe side - 604.391.SHOW(7469).

AND FINALLY...a note about scents

Some patrons have allergies or sensitivities to scented products. Please consider this when attending events. Your respect is appreciated.

If this is sent to you in error, or you wish to stop receiving this newsletter, click [here](#) or please reply to this message with "remove from mailing list" in the subject line, thank you.