



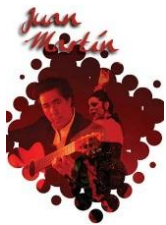
Dear Patron,

You are receiving this email as you had indicated that you were interested in being sent information about upcoming events available through the Centre Box Office. If you see something you like, just click on the link for that show to get more details or to order tickets. You can also contact the Centre Box Office in person (Mon-Fri, 9:30am-9:00pm, Sat & Sun, 9:30am-5:00pm) at 9201 Corbould Street, Chilliwack, BC, V2P 4A6, by phone at 604.391.SHOW(7469), or online at www.chilliwackculturalcentre.ca We look forward to seeing you at the next show for some fantastic entertainment!

Upcoming Events

[Click Here to Buy Tickets On-Line](#)

The Chilliwack Community Arts Council presents



JUAN MARTIN

Celebrated flamenco guitar virtuoso Juan Martin is listed among *Guitar Player* magazine's top three guitarists in the world. This master guitarist's amazing talent on the acoustic guitar fills the theatre with crystalline clarity you must experience. Expect an evening of passion, excitement and electricity - fantastico!

[YouTube](#) of Juan Martin

Chilliwack Cultural Centre - Main Theatre

7:30 PM Monday, November 7, 2011

All Tickets: \$31.92 (\$25 plus facility fees & taxes)

[MORE INFO](#) [BUY ONLINE](#)

The Chilliwack Arts & Cultural Centre Society presents



ATONEMENT

With presentations spanning from Bangkok to New York, **MOVE: the company's** new creation, *Atonement*, is sure to rock the contemporary ballet world with their 29 award-winning and highly-acclaimed dancers. The innovative program also includes a re-imagined version of "The Red Nocturnal", a physically demanding tango ballet en pointe, as well as "Les Oiseaux", a barefoot take on traditional classical ballet narratives, both by

company founder and director, Josh Beamish

[YouTube](#) of creating Atonement

Chilliwack Cultural Centre - Main Theatre

8:00 PM Friday, November 11, 2011
\$30-Adult \$27-Senior Student-\$25
[MORE INFO](#) [BUY ONLINE](#)

The Chilliwack Art & Cultural Centre Society presents

BUDDY: THE BUDDY HOLLY STORY



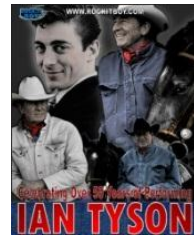
8:00 PM Sunday, November 13, 2011

SOLD OUT!

**Be sure to buy tickets early for future shows
and events to avoid disappointment.**

Rock.It Boy Entertainment presents

THE LEGENDARY IAN TYSON



IAN TYSON is an internationally acclaimed singer, songwriter and multi award winner celebrating five decades of performances with his 2011 North American tour taking him from the superstar status of Ian & Sylvia in the 60's to the legendary Tyson of today with his current albums, *Yellowhead to Yellowstone and other Love Stories* (2008) and the half EP, *Songs from the Stone House* (2011), both earning critical acclaim in Canada and the United States. Ian continues to keep his loyal fans in awe with songs that range from his classics, "Four Strong Winds" (named Canada's top song of the 20th century), "Someday Soon" and "Navajo Rug", to his newest works in which he continues to write with inspired vigour.

Ian Tyson's [Website](#)

Chilliwack Cultural Centre - Main Theatre

7:30 PM Monday, November 14, 2011

All Tickets: \$48

[MORE INFO](#) [BUY ONLINE](#)

The Creative Outlet Studio presents



A NUTCRACKER BALLET

The beloved characters and Tchaikovsky's memorable melodies from the classic tale, *The Nutcracker*, are fine tuned into a magical holiday performance for the whole family! More on Creative Outlet's [Website](#).

Chilliwack Cultural Centre – Rotary Hall Studio Theatre

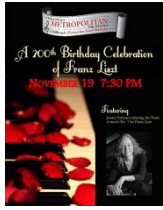
7:00 PM Saturday, November 19, 2011

1:30 & 4:00 PM Sunday, November 20, 2011

All Tickets: \$9.75

[MORE INFO](#) [BUY ONLINE](#)

The Chilliwack Metropolitan Orchestra presents



A 200th BIRTHDAY CELEBRATION OF FRANZ LISZT

On November 19th, the Chilliwack Metropolitan Orchestra will be celebrating the 200th birthday of virtuoso pianist and composer, Franz Liszt. Chilliwack born pianist, Janice Fehlauer, will be performing the Liszt Piano Concerto no. 1 in E Flat Major. Also on the evenings' program will be a selection of light, entertaining overtures by Franz von Suppe and Emmanuel Chabrier. More about the Orchestra on their [website](#).

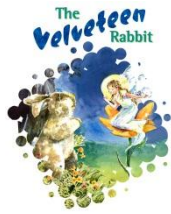
Chilliwack Cultural Centre – Main Theatre

7:30 PM Saturday, November 19, 2011

Adults: \$25 Students: \$15

[MORE INFO](#) [BUY ONLINE](#)

The Chilliwack Art & Cultural Centre Society presents



THE VELVETEEN RABBIT

Erewton Theatre's award-winning adaptation of the Velveteen Rabbit portrays a young child's world of special toys. "When a child loves you for a long time, not just to play with, but really loves you, then you become REAL", explains the Skin Horse in the story.

Erewonthetheatre.com

Chilliwack Cultural Centre – Main Theatre

2 & 4 PM Sunday, November 20, 2011

All Tickets: \$10

[MORE INFO](#) [BUY ONLINE](#)

The Chilliwack Academy of Music presents



NEW MUSIC CONCERT

The students of the Chilliwack Academy of Music present a concert of **New Music** from around the world. Inspired by Canadian Music Week, this event celebrates the music of recent composers as well as the talent of our local youth. More about The Chilliwack Academy of Music on their [Website](#).

Chilliwack Cultural Centre – Main Theatre

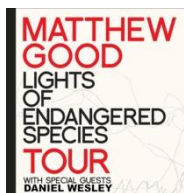
8 PM Monday, November 21, 2011

Free Admission

[MORE INFO](#)

89.5 The Hawk and Rock It Boy Entertainment presents

MATHEW GOOD with SPECIAL GUEST DANIEL WESLEY



Over his almost two-decade career, Good has continually pushed forward into uncharted territories, mapping new musical landscapes. His newest release, *Lights Of Endangered Species* takes Good into the unfamiliar, displaying arrangements that are a distinct departure from the likes of *Born Losers* and *Last Parade*. "Stark and passionate" best describe his latest effort and despite its differences the record still resonates with his fans. Check out the [website](#) for Mathew Good and on [YouTube](#),

also special guest Daniel Wesley's [YouTube](#) video.

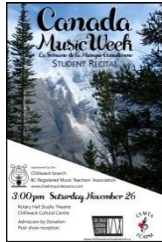
Chilliwack Cultural Centre – Main Theatre

7:30 PM Thursday, November 24, 2011

All Tickets: \$47.50 (\$42.50 plus facility fees)

[MORE INFO](#) [BUY ONLINE](#)

BC Registered Music Teachers Association presents



WINTER STUDENT RECITAL

Join us for this exhilarating performance of pieces celebrating 50 years of Canadian music. Great Music and a reception to follow in the lobby after the recital. It is with great pride that we feature Canadian Music in our recital. See the BCMTA's [website](#)

Chilliwack Cultural Centre – Rotary Hall Studio Theatre

3:00 PM Saturday, November 26, 2011

Admission by donation

[MORE INFO](#)

The Chilliwack Symphony Orchestra and Chorus presents



G.F. HANDEL'S MESSIAH

The Chilliwack Symphony Orchestra and Chorus began in August of 1999 under the direction of their founder, the late Maestro John Van Liempt. Maestro Clyde Mitchell, Principal Conductor, works in partnership with Resident Conductor, Paula DeWitt-Krause to produce exhilarating concerts.

Give us a listen [YouTube](#)

First Avenue Christian Assembly

7:30 PM Sunday, November 26, 2011

Dress Circle: \$30 Orchestra \$25 General \$20

[MORE INFO](#) [BUY ONLINE](#)

Sonic Flower Entertainment presents



DARREN LEE "WORLDS NO. 1 ELVIS TRIBUTE"

This show premieres after eleven consecutive years starring in the high-profile *American Superstars* show at the Stratosphere Hotel & Casino on the Las Vegas strip. Darren was probably known best in the Vancouver area and the Elvis world as being the first Elvis tribute to completely re-create *Elvis 1968 Comeback Special* at

the Queen Elizabeth and Michael. J Fox theatres. Check him out on [YouTube](#)

Chilliwack Cultural Centre – Main Theatre

8 PM Saturday, November 26, 2011

All Tickets: \$35 +tax

[MORE INFO](#) [BUY ONLINE](#)

The Chilliwack Players Guild presents



'TIS THE SEASON

A fun-filled variety show to get the whole family in the Holiday spirit. Lots of skits and songs for the young and the young at heart, which will have you laughing, tapping your toes and maybe even singing along! For more information about The Chilliwack Players Guild check out the [website](#).

Chilliwack Cultural Centre – Main Theatre

7:30 PM Wednesday, November 30, and December 1, 2 & 4, 2011

2:00 PM Saturday, December 3 and Sunday December 4, 2011

Adult \$15 Student/Senior \$12 Family/Group of four \$40

[MORE INFO](#) [BUY ONLINE](#)

Chilliwack Art Gallery

The Chilliwack Visual Artists Association presents



INSPIRED BY LIGHT *Featuring Sylvie Roussel-Janssens*

Exhibition of light sculptures in a variety of sizes, colours, and themes. Exploring the possibilities between art and design, Sylvie Roussel- Janssens has now embarked in a new adventure with her light sculptures. Using fabric and welded wire, magical shapes and images become abstract pieces, masks, kinetic sculptures or a whole range of native trees in the form of wall pieces. Opening Reception: 1:00 - 3:00 pm Saturday, November 5, 2011. See more on [Sylvie's website](#)

Chilliwack Cultural Centre – Chilliwack Arts Gallery

November 2 - December 8, 2011

Gallery Hours: 12:00-5:00 PM Wednesday - Saturday

Free Admission

[MORE INFO](#)

ALSO AT THE CENTRE BOX OFFICE

[Christmas with the Rat Pack](#) – December 9, 2011

[Amahl & the Night Visitors](#) – December 10, 2011

[A Year with Frog and Toad](#) – January 12 – 22, 2012

[The Ultimate Comedy Show](#) – January 27, 2012

[The Sojourners](#) – January 28, 2012

[Bella Notte](#) – February 4, 2012

[Rhapsody for Two – The Bergmann Duo](#) – February 12, 2012

[National Ballet of Cuba](#) – February 14, 2012

[Chris Gibbs is...Antoine Feval](#) – February 16, 2012

[Ndidi O](#) – February 24, 2012

[Secrets...with Shawn Farquhar](#) – February 25, 2012

[I Am Woman! Hear Me Laff!](#) – March 8, 2012
[Hansel & Gretel](#) – March 11, 2012
[Fire & Passion – Joel Stobbe](#) – March 11, 2012
[Walking Mad & Other Works](#) – March 17, 2012
[Caladh Nua](#) – March 21, 2012
[Good Timber – Songs and Stories of the Western Logger](#) – March 29, 2012
[Voices](#) – March 31, 2012
[Peter Pan](#) – April 8, 2012
[UBUNTU – The Cape Town Project](#) – April 10, 2012
[Fiddler on the Roof](#) – April 18 – 28, 2012
[Bohemian Rhapsodies – The Pacific Rim String Quartet](#) – April 22, 2012
[Annual Spring Grand Concert](#) – May 26, 2012
[Awakenings](#) – July 11 – 15, 2012

Want to know more? To find out more details on upcoming events, venue rentals, series subscriptions, and more, check out www.chilliwackculturalcentre.ca or call the Centre Box Office at 604.391.SHOW(7469).

ERRORS AND OMISSIONS

While we take many precautions to ensure the accuracy of the Centre Box Office Newsletter, occasionally errors or omissions appear. Ticket holders are encouraged to double-check dates and times on their tickets. Information on the Tickets always supersedes email listings. Should there be a discrepancy between the cost, date, time, or venue listed in this email verses the information provided to us by the presenter, then the presenter information shall always be taken as correct. If you are unsure, please call the Centre Box Office to be on the safe side - 604.391.SHOW(7469).

AND FINALLY...a note about scents

Some patrons have allergies or sensitivities to scented products. Please consider this when attending events. Your respect is appreciated.

If this is sent to you in error, or you wish to stop receiving this newsletter, click [here](#) or please reply to this message with "remove from mailing list" in the subject line, thank you.



birthdays • anniversaries • thank you's • holidays

**Gift Certificates
make the
perfect gift!**

available in \$20 & \$50

Treat family, friends and co-workers to **thrilling entertainment!**

 **604.391.SHOW(7469)**