

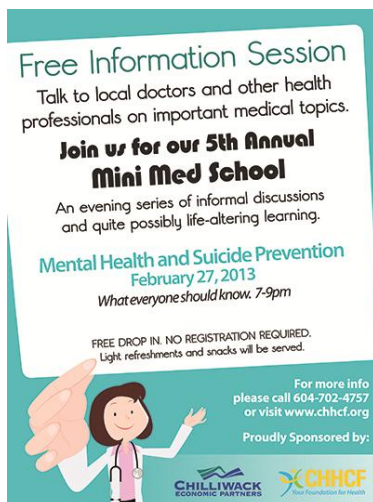


Dear Patron,

You are receiving this email as you had indicated that you were interested in being sent information about upcoming events available through the Centre Box Office. If you see something you like, just click on the link for that show to get more details or to order tickets. You can also contact the Centre Box Office in person (Mon-Fri, 9:30am-9:00pm, Sat & Sun, 9:30am-5:00pm) at 9201 Corbould Street, Chilliwack, BC, V2P 4A6, by phone at 604.391.SHOW(7469), or online at [www.chilliwackculturalcentre.ca](http://www.chilliwackculturalcentre.ca) We look forward to seeing you at the next show for some fantastic entertainment!



[Click Here to Buy Tickets On-Line](#)



Mini Med School presents

## Mental Health and Suicide Prevention

**What everyone should know. Free Information Session.** Talk to local doctors and other health professionals on important medical topics. **Join us for our 5th Annual Mini Med School.** An evening series of informal discussions and quite possibly life-altering learning. *Light refreshments and snacks will be served.*

[MORE INFO](#)

Chilliwack Cultural Centre – Rotary Hall Studio Theatre

7 to 9 PM February 27, 2013

Free drop in.

No registration required.



The Chilliwack Arts & Cultural Centre Society presents

## Speed Control

**MUSIC SERIES**

Straight out of the University of Toronto's Jazz Performance Program, Graeme Peters teamed up with brother Jody Peters combining their love of rhythm and energy to create the fundamental chemistry that is **Speed Control**. With the added solid power of Ian March on drums, the group uses their knowledge of music, stemming from their childhood to the present, to rock so hard with such determination that their songs will inevitably make you jump up and dance. **Speed Control** rocks out with the best of them. Their show has humour, emotion, and power that can move any audience.

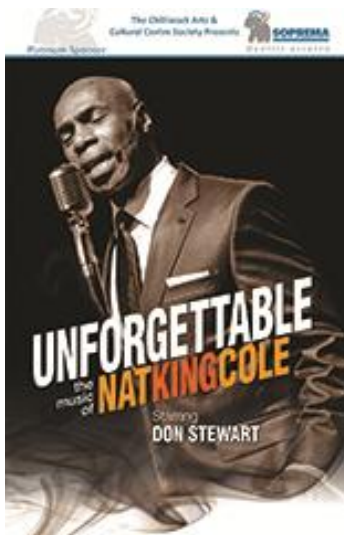
[MORE INFO](#) [WEBSITE](#) [Youtube](#) [Facebook](#)

Chilliwack Cultural Centre – Main Theatre

7:30 PM March 1, 2013

All Tickets \$25

[BUY TICKETS](#)



The Chilliwack Arts & Cultural Centre Society presents

## Unforgettable

**MUSIC SERIES**

Winning the love of millions with his musical prowess and down-to-earth personality, Nat 'King' Cole told stories of love, hurt and joy in a memorable and beautiful way that left his audiences transfixed. **Unforgettable** chronicles the life of the beloved superstar as he transcended the boundaries of race, culture, and geography, becoming one of the most recognizable American voices since Frank Sinatra. Vancouver Jazz singer Don Stewart recreates this amazing singer's timeless songs with a unique style, and a rich voice. This spectacular show details the rise from club piano player to world superstar with an incredible voice capable of great emotion; and in doing so, captures the genius of Nat 'King' Cole perfectly.

[MORE INFO](#) [WEBSITE](#) [Youtube](#) [Facebook](#)

Chilliwack Cultural Centre – Main Theatre

7:30 PM March 2, 2013

Adult \$30

Senior \$27

Student \$25

[BUY TICKETS](#)

The Chilliwack Lions Club presents

## Dance Honours Performance



Celebrating our 66th annual festival in 2013, the festival has been an entertaining and exciting way for our talented local youth to showcase their abilities. Dedicated to encouraging and empowering young dancers and musicians to excel in their chosen discipline, the **Chilliwack Lions Club Music & Dance Festival** is a self-supporting, non-profit organization. Our dedicated members consist of volunteers from the local Lions Clubs and community who are interested in the artistic development of young people. This festival is a must-see event year after year!

[MORE INFO](#) [WEBSITE](#) [Youtube](#) [Facebook](#)

**Chilliwack Cultural Centre – Main Theatre**

**1:30 PM March 3, 2013**

**Tickets \$15**

[BUY TICKETS](#)

The Chilliwack Arts & Cultural Centre Society and the Chilliwack Academy of Music presents

## Café Paris

### *RAIN MOUNTAIN CLASSICAL MUSIC SERIES*

**Jasper Wood** and **Daniel Bolshoy** invite you to a musical rendezvous celebrating Paris, the romantic inspiration of Europe, and a program featuring music by the composers who made Paris their home in the early 1900's. From Ravel to Villa-Lobos, Piazzolla to Gershwin and da Falla to Django Reinhardt. Sit in a Café with Piazzolla before you hit the Hot-Club with Django, and hear echoes of Spain while sipping Bordeaux with Sarasate. This duo will entertain you with their stories and dazzle you with their virtuosity - this is sure to be a night not to be missed.



[MORE INFO](#) [WEBSITE](#) [Facebook](#)

**Chilliwack Cultural Centre – Rotary Hall Studio Theatre**

**2:30 PM March 3, 2013**

**Adult \$27**

**Senior \$24**

**Student \$22**

[BUY TICKETS](#)



F.G. Leary Fine Arts Elementary presents

## The Little Mermaid

This classic Disney title contains all of the songs from the Academy Award® winning animated feature film as well as three new songs from the Broadway show. THE LITTLE MERMAID JR. takes place in a magical kingdom beneath the sea, where a beautiful young mermaid named Ariel longs to leave her ocean home to live in the world above. But first, she'll have to defy her father, the king of the sea, escape the clutches of an evil sea witch and convince a prince that she's the girl with the perfect voice.

[MORE INFO](#) [WEBSITE](#) [Facebook](#)

Chilliwack Cultural Centre – Main Theatre

12:00 & 7:00 PM March 5, 2013

7:00 PM March 6, 2013

\$6.00 Matinee

\$8.50 Evening Shows

[BUY TICKETS](#)



The Chilliwack Arts & Cultural Centre Society presents

## I Am Woman! Hear Me Laff!

**COMEDY SERIES**

Join the hilarious emcee Erica Sigurdson at The Centre on national Women's Day for the third annual 'herlarious' evening of all female stand-up comedy. Opening with Stephanie Michelle the show features Lark Miller and headliner Jen Grant. These ladies will raise the bar for all comedians, proving women "got it" when it comes to big laughs. Purchase your tickets today for an evening that will have you rolling in the aisles and begging for mercy. **Adult material and situations - may not be appropriate for all audiences.**

[MORE INFO](#) [WEBSITE](#) [Youtube](#) [Facebook](#)

Chilliwack Cultural Centre – Rotary Hall Studio Theatre

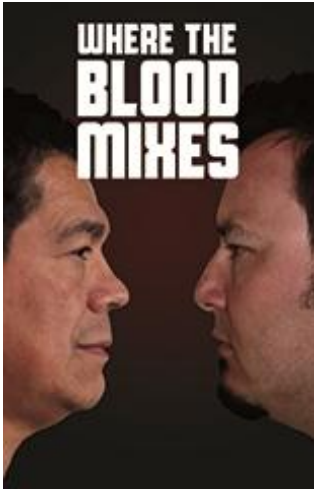
7:30 PM March 8, 2013

Adult \$30

Senior \$27

Student \$25

[BUY TICKETS](#)



The Chilliwack Arts & Cultural Centre Society presents

## Where The Blood Mixes

**THEATRE SERIES**

Irreverently funny and brutally honest, *Where the Blood Mixes* is an extremely moving story of loss and redemption. Caught in a shadowy pool of alcoholic pain and guilt, Floyd is a man who has lost everyone he holds most dear. Now after more than two decades, his daughter Christine, who had been adopted by a white family, returns home to meet and confront her father. *Where the Blood Mixes* takes us beyond the headlines to a deeply personal story about humanity and survival.

[MORE INFO](#) [WEBSITE](#) [Youtube](#) [Facebook](#)

Chilliwack Cultural Centre – Main Theatre

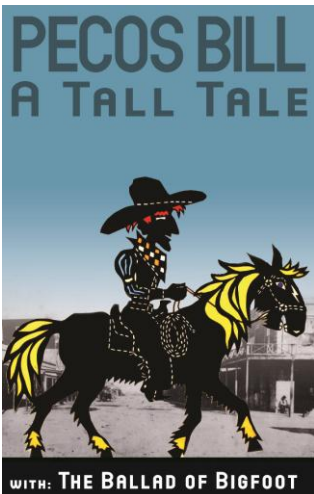
7:30 PM March 9, 2013

Adult \$30

Senior \$27

Student \$25

[BUY TICKETS](#)



The Chilliwack Arts & Cultural Centre Society presents

## Pecos Bill – A Tall Tale

**KIDS SERIES**

In the folklore of the American West, Pecos Bill has been called the creator of the Rio Grande, the lasso, the rodeo, and the first cowboy songs. The Oregon Shadow Theatre production *Pecos Bill - A Tall Tale* follows Bill from his childhood (raised by coyotes!), through his adventures (fighting mythical beasts, riding a cyclone, falling in love with a woman who rides catfish!), to the inevitable settling of the West. The graceful movement of the shadow figures and visual effects combine with sounds of hammered dulcimer, harmonica and various sound effects devices to create a delightful rendition of the tall tale of Pecos Bill.

[MORE INFO](#) [WEBSITE](#) [Youtube](#)

Chilliwack Cultural Centre – Main Theatre

2:00 & 4:00 PM March 10, 2013

All Tickets \$10

[BUY TICKETS](#)

## ALSO AT THE CENTRE BOX OFFICE

[Why Don't Kids Come with Manuals?](#) – March 13, 2013

[Spirituality & Ethics](#) – March 15, 2013

[Music Honors Performance](#) – March 15, 2013

[Italian Choral Works](#) – March 16, 2013

[Vancouver International Mountain Film Festival](#) – March 17, 2013

[Country Gold](#) – March 18, 2013

[This Is Cancer](#) – March 19, 2013

[Healthy Kids, Healthy Futures](#) – March 20, 2013

[Wilderness First Aid for the Weekend Warrior](#) – March 27, 2013

[Handel's Messiah](#) – March 29, 2013

[The Secret Garden](#) – March 30, 2013

[Elvis – The Moments with Pete Paquette](#) – April 8, 2012

[Vivaldi's Gloria and Vivaldi's Spring](#) – April 13, 2013

[Passionate Trios](#) – April 14, 2013

[Postmortem](#) – April 18-27, 2013

[Beauty and the Beast](#) – May 5, 2013

[Caring for the Caregiver](#) – May 17, 2013

[Brent Butt](#) – May 24, 2013

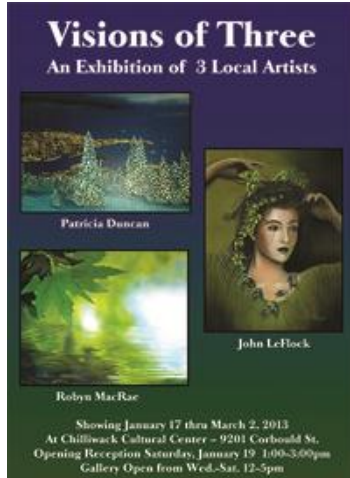
[Night in Vienna](#) – May 25, 2013

[British Pub Nights](#) – Jun 26 – Jul 5, 2013

[Joseph and the Amazing Technicolor Dreamcoat](#) – July 24 - Aug 4, 2013

[The Legends of Country and Rockabilly](#) – Sept 21, 2013

# Chilliwack Art Gallery



*The Chilliwack Visual Artists Association presents*

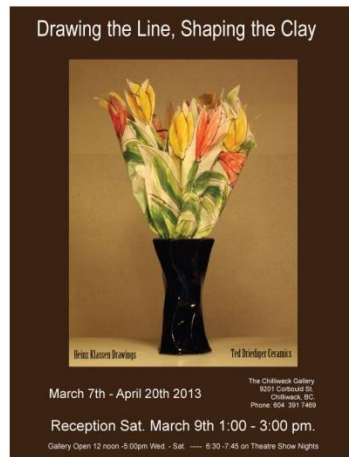
## Visions of Three

The artwork of popular artist & teacher John Leflock and two of his past students Robyn MacRae & Pat Duncan are featured in this exhibit of paintings & drawings which demonstrate the skill and technical knowledge of airbrushing along with other traditional & modern techniques.

[MORE INFO](#) [WEBSITE](#)

January 17<sup>th</sup> – March 2<sup>nd</sup>, 2013

**Gallery Hours: Noon – 5:00 PM, Wednesday to Saturday  
Open 6:30 – 7:30 on show evenings**



*The Chilliwack Visual Artists Association presents*

## Drawing the Line, Shaping the Clay

The artwork of local clay artist Ted Driediger & sketch artist Heinz Klassen is featured in this delightful exhibit of Ceramics & Ink Drawings. Heinz comments, "The drawings reflect observations, explorations and reflections of the world around me" and Ted remarked, "This exhibition focuses on the useful pot, large and small. Function and form is explored and enlivened through the use of pattern, texture and colour.

[MORE INFO](#) [WEBSITE](#)

**OPENING RECEPTION: Saturday March 9<sup>th</sup> 1 – 3PM**

**March 7<sup>th</sup> – April 20<sup>th</sup>, 2013**

**Gallery Hours: Noon – 5:00 PM, Wednesday to Saturday  
Open 6:30 – 7:30 on show evenings**

birthdays • anniversaries • thank you's • holidays

**Gift Certificates  
make the  
perfect gift!**



available in \$20 & \$50

Treat family, friends and co-workers to **thrilling entertainment!**

 **604.391.SHOW(7469)**



Click here to find us on Facebook!



Click here to follow us @ChwkCulturalCtr



The Chilliwack Cultural Centre's ***Dinner and a Show program*** offers discounts or specials at some of Chilliwack's best restaurants. On the night of your show, you simply present your ticket prior to ordering and receive your discount of special!



Restaurants involved in this fantastic offer include **Bozinni's, Corky's, Dakota's, Decades, Frankie's, Kuro, Original Joe's, Prestons, Rustica's, and Woo Mai.**

For more details go to our website:

[www.chilliwackculturalcentre.ca](http://www.chilliwackculturalcentre.ca)

**Want to know more?** To find out more details on upcoming events, venue rentals, series subscriptions, and more, check out [www.chilliwackculturalcentre.ca](http://www.chilliwackculturalcentre.ca) or call the Centre Box Office at 604.391.SHOW(7469).

#### **ERRORS AND OMISSIONS**

While we take many precautions to ensure the accuracy of the Centre Box Office Newsletter, occasionally errors or omissions appear. Ticket holders are encouraged to double-check dates and times on their tickets. Information on the Tickets always supersedes email listings. Should there be a discrepancy between the cost, date, time, or venue listed in this email verses the information provided to us by the presenter, then the presenter information shall always be taken as correct. If you are unsure, please call the Centre Box Office to be on the safe side - 604.391.SHOW(7469).

#### **AND FINALLY...a note about scents**

Some patrons have allergies or sensitivities to scented products. Please consider this when attending events. Your respect is appreciated.

If this is sent to you in error, or you wish to stop receiving this newsletter, click [here](#) or please reply to this message with "remove from mailing list" in the subject line, thank you.